

## CP4

### 450mm Single Pan Gas Pasta Cooker



CP4

- High performance single pan pasta cooker
- Patented infra-red burner system
- Easy clean 316 grade stainless steel open pan
- 40L water capacity
- Integrated water fill and starch skimming water faucet
- Six stainless steel pasta baskets supplied
- Hinged basket drain stand
- Safety cut-out thermostat for empty pan/water boil out
- Stainless steel exterior
- Easy clean
- Easy service
- Fully modular

#### OVERALL CONSTRUCTION

- Pan 1.5mm 316 stainless steel
- Stainless steel front, sides and splashback
- Vitreous enamelled control panel
- Double skin door with stainless exterior
- 25mm (1") skimming overflow and pan drain valve
- 63mm dia. stainless steel adjustable legs to front and two rollers at rear
- Six stainless steel baskets with moulded handles
- 304 stainless steel wire basket support grid in pan

#### CONTROLS

- Large easy to use knob - heat resistant reinforced
- Variable high boil to standby simmer burner control
- Fine adjustment water faucet for pan filling and water refreshing/starch skimming
- Pan protection safety cut-out thermostat
- Millivolt gas valve system (no electrical supply)
- Flame failure protection on pilot
- Piezo ignition to standing pilot burner

#### CLEANING AND SERVICING

- Open stainless steel pan for easy clean
- Hinged basket drain tray
- Removable basket support grid
- 25mm (1") drain valve for effective draining
- Easy clean stainless steel exterior
- Access to all parts from front of unit

#### Matching Products



CR9D



CR6C



CF2



CT9



C6D



C450



CT6



CS9 / C900-S



C6B



C300

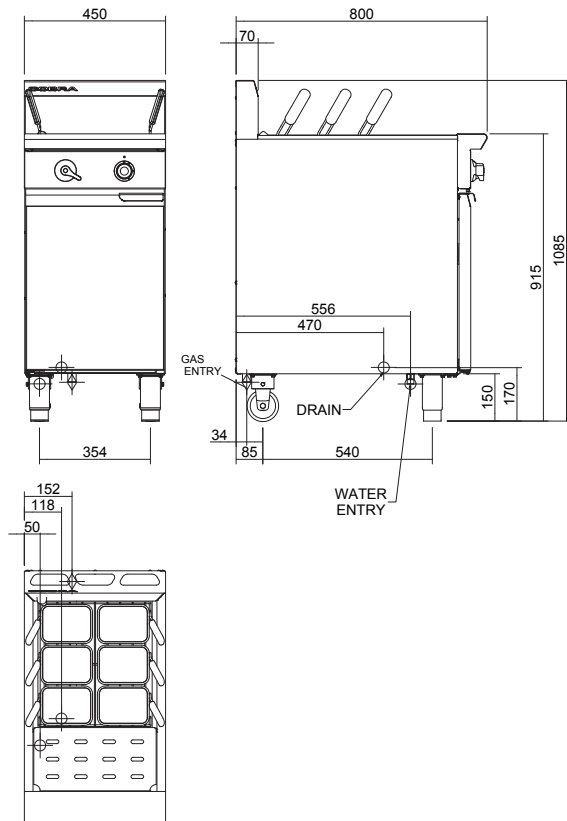
# COBRA®

YOUR STYLE, YOUR WAY



## CP4

### 450mm Single Pan Gas Pasta Cooker



CP4

#### SPECIFICATIONS

Pan size  
Water capacity 40L  
Width 365mm  
Length 405mm  
Basket immersion depth 165mm

Baskets  
6 stainless steel perforated baskets with moulded plastic handles  
125mm x 165mm x 180mm deep  
Stainless steel wire basket support grid

Burners  
1 x infra-red burner

Gas power  
Natural gas  
12.0kW (nett), 45,450 Btu/hr (gross)  
Propane gas  
12.5kW (nett), 46,350 Btu/hr (gross)

Gas flow rate  
Natural gas 1.27m<sup>3</sup>/hr  
Propane gas 0.97kg/hr

Gas connection  
R 3/4 (BSP) male  
50mm from left hand side,  
34mm from rear and  
140mm from floor

Water connection  
Cold water connection 50mm  
from left hand side, 556mm from  
rear and 140mm from floor  
R1/2 (BSP) male

Drain connection  
Drain must be connected to  
system suitable for boiling  
water discharge 1" BSP Male  
connection 118mm from  
left hand side, 470mm from rear,  
and 170mm from floor

Dimensions  
Width 450mm  
Depth 800mm  
Height 915mm  
Incl. splashback 1085mm  
Nett weight  
78kg

Packing data  
0.587m<sup>3</sup>, 95.5kg  
Width 900mm  
Depth 520mm  
Height 1255mm

Gas types  
Available in Natural gas and  
Propane gas, please specify  
when ordering  
Other gas types on request

Options  
Side splash guards  
Joining caps

[blue-seal.co.uk](http://blue-seal.co.uk)

United Kingdom  
[blue-seal.co.uk](http://blue-seal.co.uk)

Blue Seal Limited

Unit 67  
Gravelly Business Park  
Gravelly  
Birmingham B24 8TQ  
England  
Telephone 0121-327 5575  
Facsimile 0121-327 9711  
[sales@blue-seal.co.uk](mailto:sales@blue-seal.co.uk)

Australia  
[moffat.com.au](http://moffat.com.au)

Moffat Pty Limited

740 Springvale Road  
Mulgrave, Victoria 3170  
Australia  
Telephone +613-9518 3888  
Facsimile +613-9518 3833  
[vsales@moffat.com.au](mailto:vsales@moffat.com.au)

New Zealand  
[moffat.co.nz](http://moffat.co.nz)

Moffat Limited

Rolleston  
45 Illinois Drive  
Izone Business Hub  
Rolleston 7675  
Telephone +64 3-983 6600  
Facsimile +64 3-983 6660  
[sales@moffat.co.nz](mailto:sales@moffat.co.nz)



ISO9001  
Quality  
Management  
Standard

Designed and manufactured by

**MOFFAT®**

ISO9001

All Cobra products are designed and manufactured by Moffat using the internationally recognised ISO9001 quality management system, covering design, manufacture and final inspection, ensuring consistent high quality at all times.

In line with policy to continually develop and improve its products, Moffat Limited reserves the right to change specifications and design without notice.



© Copyright Moffat Ltd  
UK.C.01.19 / 1622

an Ali Group Company



The Spirit of Excellence